

# WhiteNut

Design stage

**ARCHITECTURAL PART**

Address:

Region Kotayk, community Abovyan, village Arinj Kh. 2nd street of Abovyan district no  
29 plots

## Explanation



The total area of all the floors of private houses 1, 3, 4, 6, including the terraces from the external borders of the external walls, is 183.92 square meters.

2 and 5 private houses: - 174.14 square meters

The total construction area of all private houses is 1083.96 square meters, of which 98.2 are terraces.

First floor - 310.36 square meters.

Second floor - 388 square meters.

Third floor - 385.6 square meters. including 98.2 square meters of terraces

\*Surfaces are total and are calculated by the external borders of the external walls.

The construction area of the first floors of the houses provided by the general project is 310.36 square meters. (including walls), which corresponds to 33.5% of the total area, the walled part is 615.7 square meters, which is 66.4% of the total area. The impermeable surface is 310 square meters, which is 33.6%.

The area of the plot is 926 square meters.

Region Kotayk, community Abovyan village Arinj K. Plot No. 29  
Hovagimyan Street,  
to the certificate of cadastral number N 19042023-07-0218  
residential houses on the corresponding plot of land.

The planned building will consist of six private houses, each of which will have three full floors.

The residential complex will consist of two identical buildings of equal surface area and volume, separated by an anti-seismic seam.

Three residential houses are planned in each building.

Open-air parking spaces are planned for each private house.

1, 3, 4, 6 houses will be 138.86 square meters each, and 2 and 5 will be 149.19 square meters each. by area (the usable area without external walls), which does not include the terraces of the third floor (the area of the terraces of the third floor is (for houses 1.3.4.6) 21.7 and (for houses 2 and 5) 5.7 square meters). The general structural system of the buildings is made of reinforced concrete.

First floor - kitchen/dining room, bathroom, living room.

1st, 3rd, 4th, 6th private houses - 45.2 square meters (52.6) square meters,

2nd and 5th private houses - 43.2 square meters (49.98) square meters

Second floor - two bedrooms, two bathrooms.

1st, 3rd, 4th, 6th private houses - 57.31 square meters (65.9) square meters,

2nd and 5th private houses - 55.1 square meters (62.2) square meters

Third floor - one/two bedrooms, one bathroom, terraces.

1st, 3rd, 4th, 6th private houses - 36.35 square meters (65.42) square meters. one bedroom.

2nd and 5th private houses - 50.89 square meters (61.96) square meters. two bedrooms.

Terraces on the third floor

1st, 3rd, 4th, 6th private houses - 21.7 square meters.

2nd and 5th private houses - 5.7 sq.m.

\*The above-mentioned surfaces are calculated with the inner edges of the outer walls, and in the parentheses, the outer edges.

Yard areas:

1st apartment (1-2 axes) 187.31 sq.m.

2nd apartment (2-3 axes) 87.3 sq.m.

3rd apartment (3-4 axes) 85.62 sq.m.

4th apartment (5-6 axes) 77.2 sq.m.

5th apartment (6-7 axes) 67.9 square meters

6th apartment (7-8 axes) 113.6 square meters



































































# Master plan



House 1  
239 sqm.

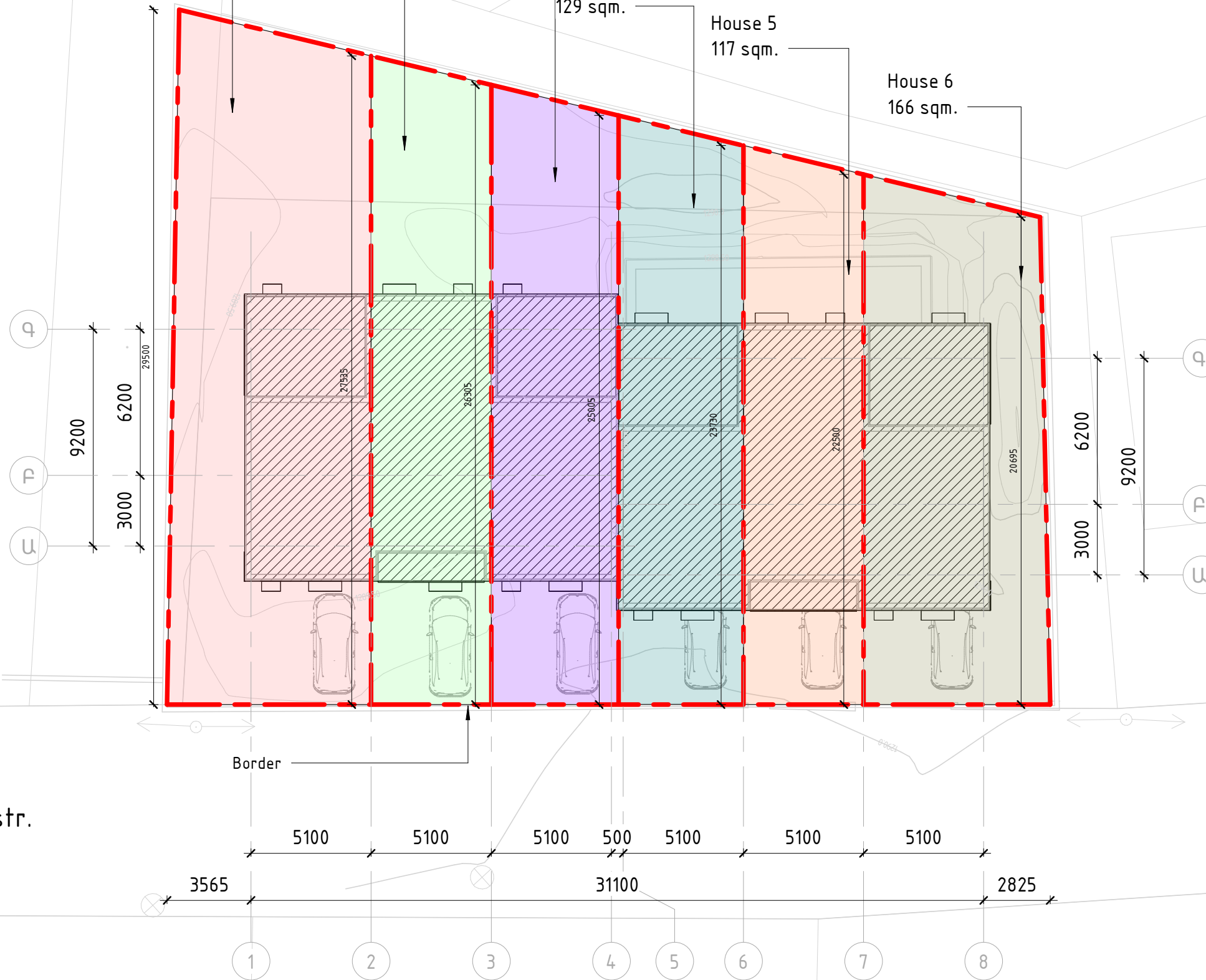
House 2  
137 sqm.

House 3  
138 sqm.

House 4  
129 sqm.

House 5  
117 sqm.

House 6  
166 sqm.



K. Hovagimian str.

1

2

3

4

5

6

7

8

3565

31100

2825

9200

6200

29500

3000

6200

9200

3000

5100

5100

5100

500

5100

5100

5100

Border

Α

Β

Γ

Α

Β

Γ

27985

26305

25005

23730

22580

20695



# 1-st floor plan





# 2-nd floor plan





3-th floor



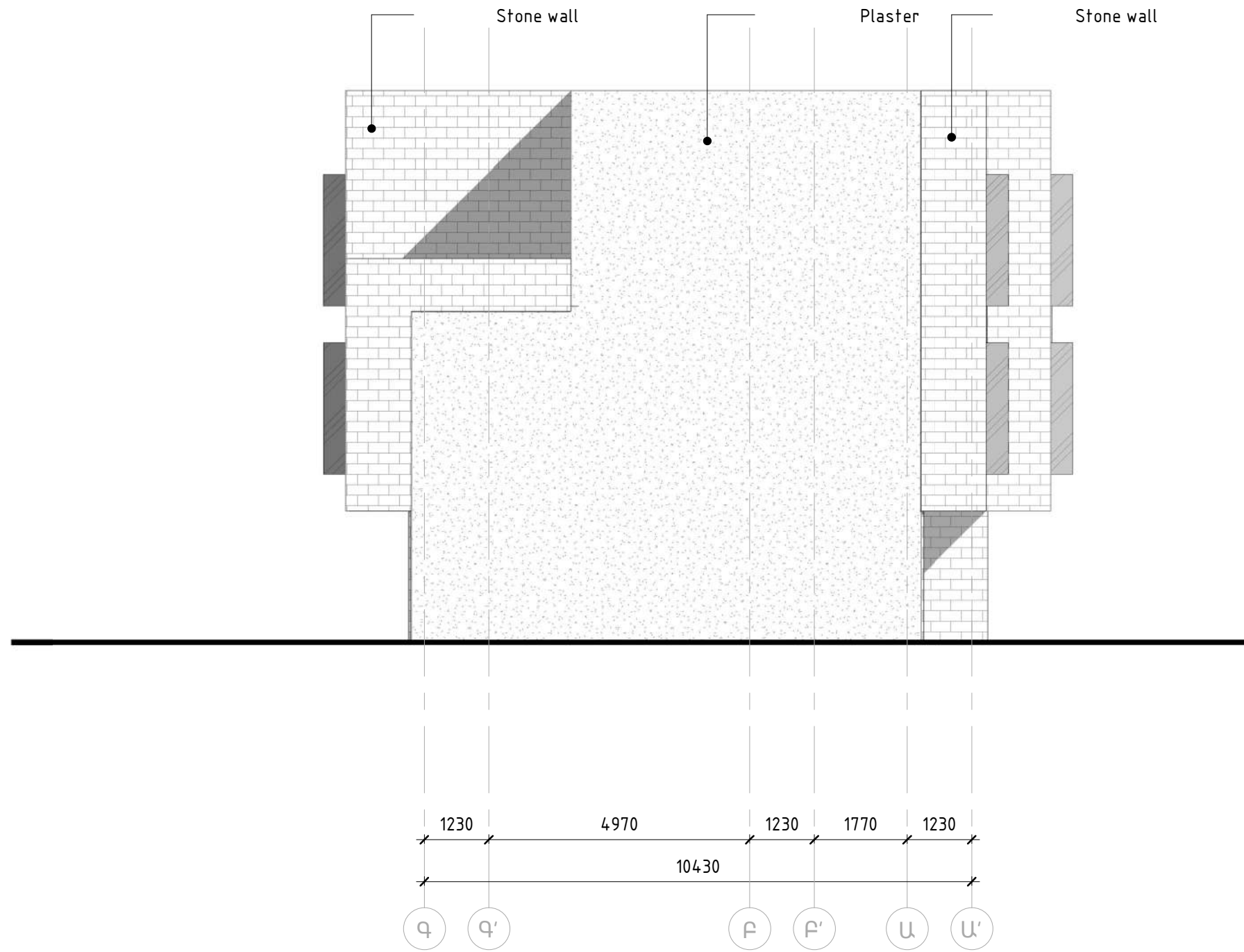


# South-east elevation



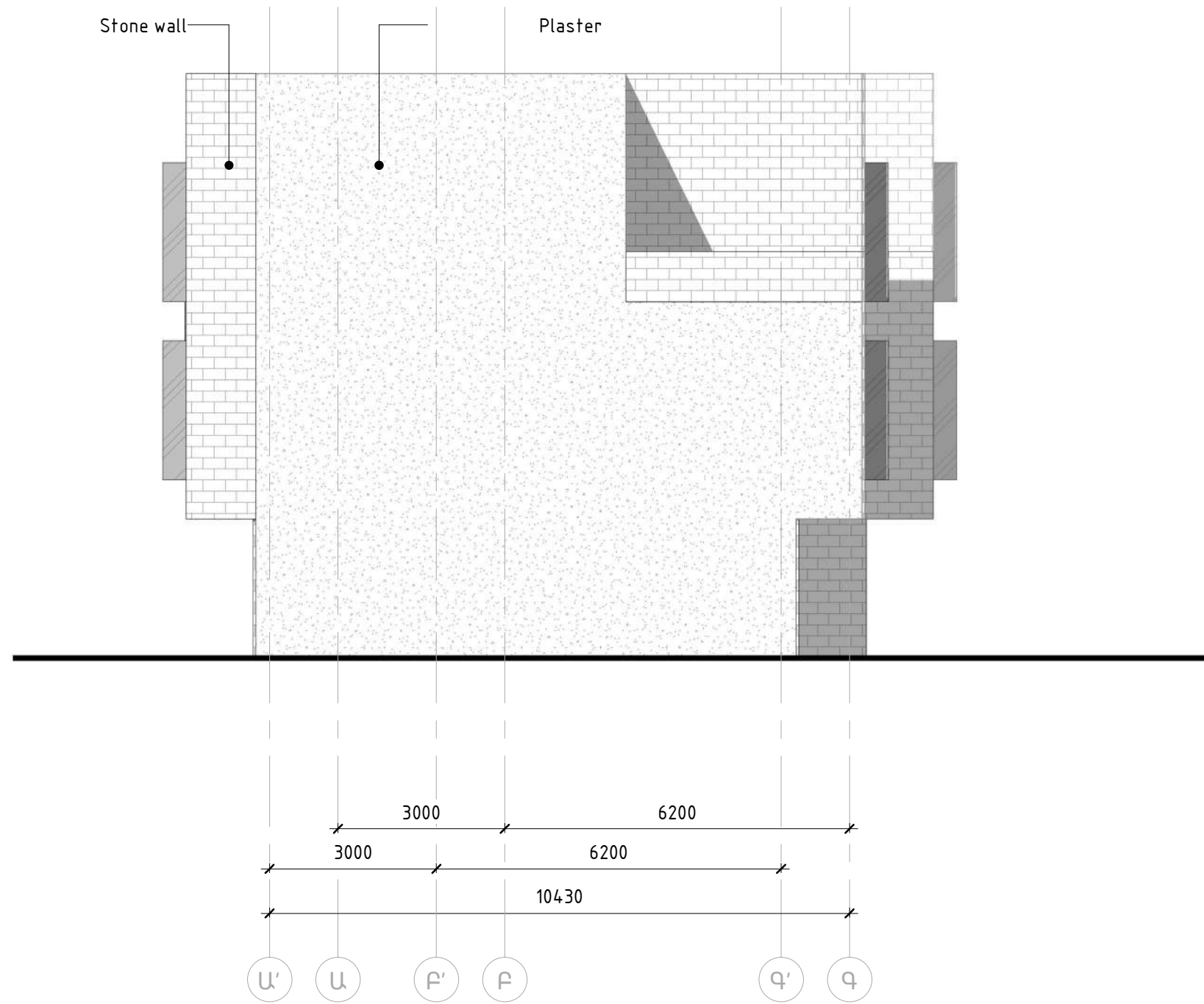


# South-west elevation





# North-east elevation





# Section

